

# trion S monoblock heat pump

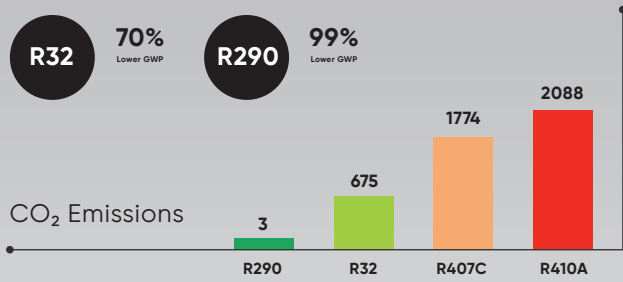


## Eco-Friendly Technology High Efficiency



## Refrigerant

Compared to the refrigerants widely used today, such as R-410A and R407C, R32 and R290 have much lower global warming potential, which helps speed up their popularity in the heat pump industry.



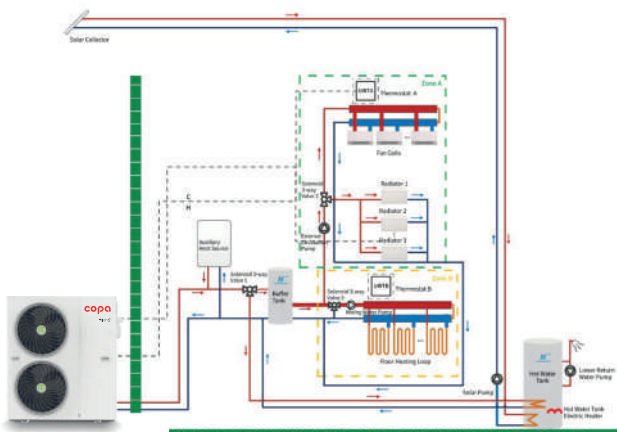
## High Quality Colored Wire Controller

Trion S R32 Heat pumps utilize an intelligent color LCD display with high definition interface and powerful functions, which is very friendly and helpful for users to view and control.



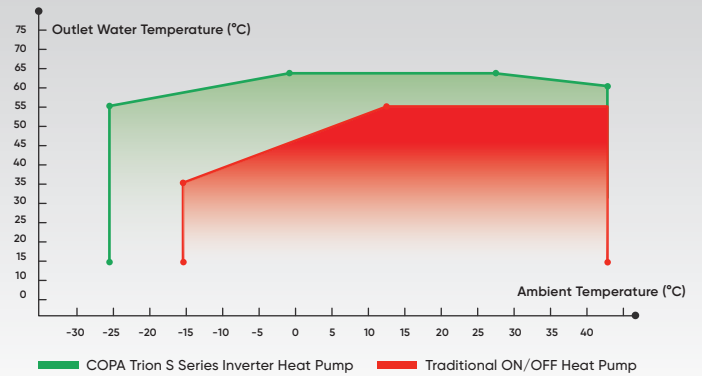
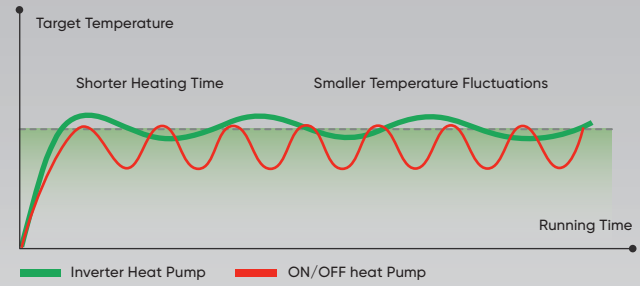
## Whole-house Installation Sketch

Trion S R32 EVI heat pump allows the interlock with auxiliary heat sources to provide heating, cooling and hot water for the house. With the smart Grid control function, the unit can automatically switch states to make full use of idle power, further saving electricity, according to the power storage of photovoltaics and the power status of the grid. Additionally, users can Access a room thermostat to control the switch of the host unit and realize precise zone control.



## Full DC Inverter Technology

Trion S adopts full DC inverter technology, which can automatically adjust the frequency according to the ambient temperature to achieve a more constant temperature and bring users a quite comfortable experience at home.



Stable running at -25 °C ambient temperature and the max water outlet temperature is up to 60 °C

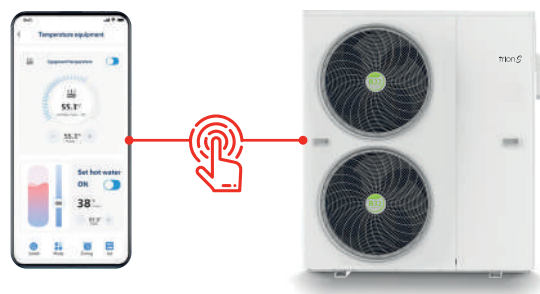
## Low Noise

Trion S devotes to creating a pretty quiet running environment for the user through multiple noise reduction measures.



## IoT Function

Connect the TuyaOS App to check the realtime running status, historical records and control the heat pump remotely.



## Key Components



### DC Inverter Compressor

Famous brand compressor ensures the stable heating capacity and reduces noise.



### DC Fan Motor

DC fan motor is equipped to improve higher work efficiency and lower noise.



### Plate Heat Exchanger

Plate heat exchanger with well-known brand is selected to increase heat Exchange area for higher COP.



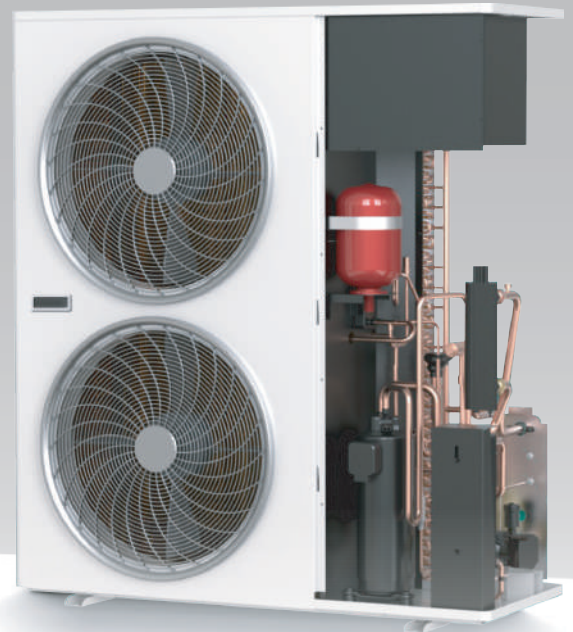
### DC Inverter Circulation Pump

Famous silent circulation pump is installed inside the unit to realize more comfortable experience.



### Expansion Tank

Built-in expansion tank to keep stable water system and convenient installation.



## Trion S Heat Pump Technical Specifications

Model		6kW	8kW	11kW	15kW
Refrigerant Type		R32	R32	R32	R32
ErP Level (35°C)		A+++	A+++	A+++	A+++
ErP Level (55°C)		A++	A++	A++	A++
Power Supply		220~240/1N~/ 50Hz	220~240/1N~/ 50Hz	220~240/1N~/ 50Hz	220~240/1N~/ 50Hz
Max. Heating Capacity 1	kW	6,14	8,24	11,5	15,36
Power Input 1	kW	1,33	1,81	2,55	3,4
COP 1		4,61	4,55	4,51	4,52
Max. Heating Capacity 2	kW	6,01	8	11,01	14,98
Power Input 2	kW	2,55	3,1	4,18	5,55
COP 2		2,67	2,58	2,63	2,69
Max. Cooling Capacity 3	kW	4,03	5,18	7,21	9,98
Power Input 3	kW	1,59	2	2,77	3,9
EER 3		2,53	2,59	2,6	2,56
Max. Heating Capacity 4	kW	6,84	9,05	12,36	16,98
Power Input 4	kW	1,48	1,95	2,74	3,66
COP 4		4,62	4,64	4,51	4,64
<b>General Info</b>					
Electric Heater Rated Input	kW	3	3	3	2/4/(optional) 9.5(7.5+2) 11.5(7.5+4) 13.5(7.5+6)
Max. Power Input	kW	6(3+3)	7 (4+3)	8.5 (5.5+3)	43.2(34.1+9.1) 52.3(34.1+18.2) 61.4(34.1+27.3)
Max. Running Current	A	27.4(13.7+13.7)	31.8 (18.1+13.7)	38.7 (25.0+13.7)	
Expansion Tank	L	3	3	3	5
Compressor		Panasonic	Panasonic	GMCC	Panasonic
Water Circulation Pump		WILO(DC Inverter)	WILO(DC Inverter)	WILO(DC Inverter)	WILO(DC Inverter)
Water Side Heat Exchanger		Plate Heat Exchanger	Plate Heat Exchanger	Plate Heat Exchanger	Plate Heat Exchanger
Air Side Heat Exchanger		Finned Heat Exchanger	Finned Heat Exchanger	Finned Heat Exchanger	Finned Heat Exchanger
Display		4-inch Colored Touch Screen	4-inch Colored Touch Screen	4-inch Colored Touch Screen	4-inch Colored Touch Screen
Wi-Fi Function		Yes	Yes	Yes	Yes
Rated Water Flow	m <sup>3</sup> /h	1,03	1,38	1,9	2,6
Water Pressure Drop	kPa	17	20	22	26
Water Pipe Connection	Inch	G1 "	G1 "	G1 "	G1 "
Sound Pressure Level dB(A) at 1m	dB(A)	50~63	51~67	52~68	53~69
Operation Range	°C	-30~43	-30~43	-30~43	-30~43
Max. Outlet Water Temp.	°C	60	60	60	60
Water Proof Class		IPX4	IPX4	IPX4	IPX4
Electricity Shock Proof		Class I	Class I	Class I	Class I
Net Weight	kg	98	120	136	150
Net Dimensions (L*W*H)	mm	1159X479X775	1159X479X875	1159X479X875	1259X479X1445
Package Dimensions (L*W*H)	mm	1270x590X970	1270x590x1070	1270x590x1070	1370x590x1640

1. [Space heating] Ambient Temp. (DB/WB): 7°C/6°C, Water Temp. (Inlet/Outlet): 30°C/35°C  
 2. [Space heating] Ambient Temp. (DB/WB): 7°C/6°C, Water Temp. (Inlet/Outlet): 50°C/55°C

3. [Space Cooling] Ambient Temp. (DB/WB): 35°C/-, Water Temp. (Inlet/Outlet): 12°C/7°C.  
 4. [Hot Water] Ambient Temp. (DB/WB): 20°C/15°C, Water Temp. from 15°C to 55°C.